

## Appendix B

### Information Extraction Agent Program Manual

Information Extraction Agent or IEA extracts key decision factors from discussion messages during group meeting. These key decision factors are composed of decision criteria and decision alternative. The task of the IEA starts when the discussion message is fed to the system via electronic meeting system. The results of the information extraction, which are composed of word type (Part of Speech Tag) and type of the decision classifier, are fed to the electronic meeting server and distributed the Intelligent Facilitation Agent (IFA).

Main program of IEA for monitoring discussion messages and presenting the results of extraction is illustrated in Figure B.1.

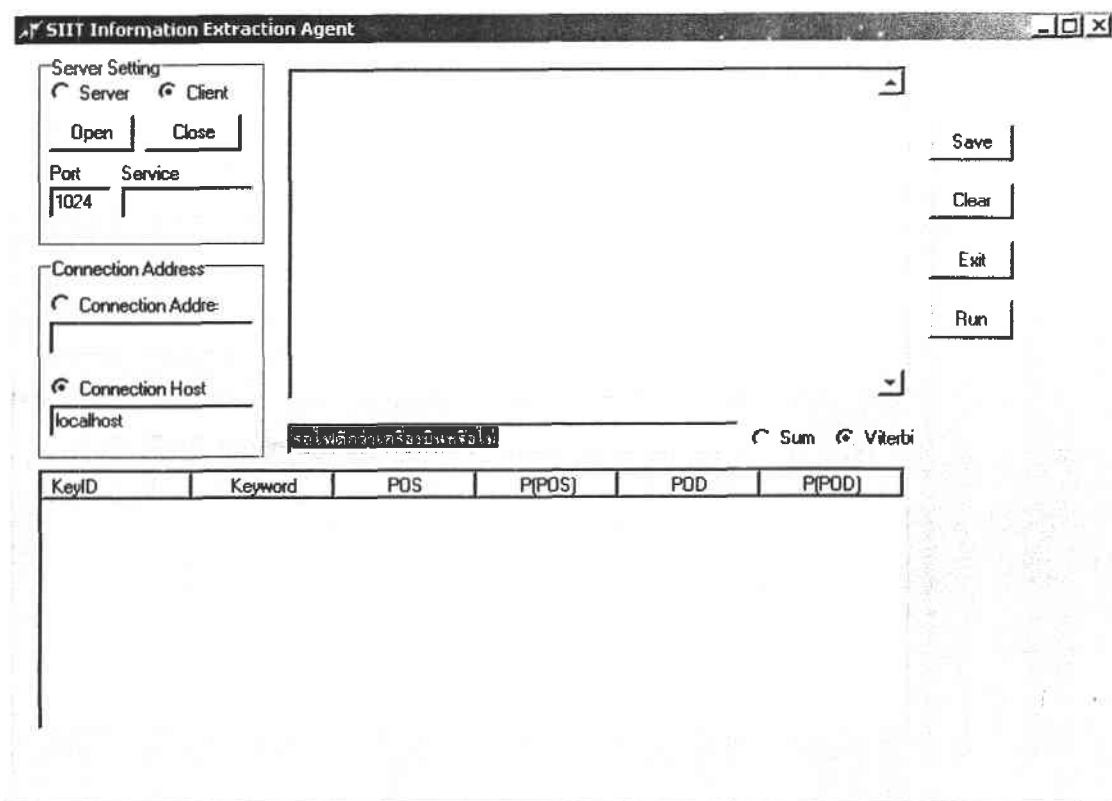




Figure B.1 Information Extraction Agent for Electronic Meeting System

## Getting start with Information Extraction Agent

### To start Information Extraction Agent:

1. Start electronic meeting server for IEA (see **Appendix C**)
2. Double click  to start IEA.
3. Configure “server setting” of IEA to be  Client (Default)
4. Fill “port” or “service” that provided by server for transferring data.
5. Fill “connection address” (IP Address) or “connection host” (name)
6. Click  for connecting to server

After these steps, main program of IEA will be start as illustrated in Figure B.2.

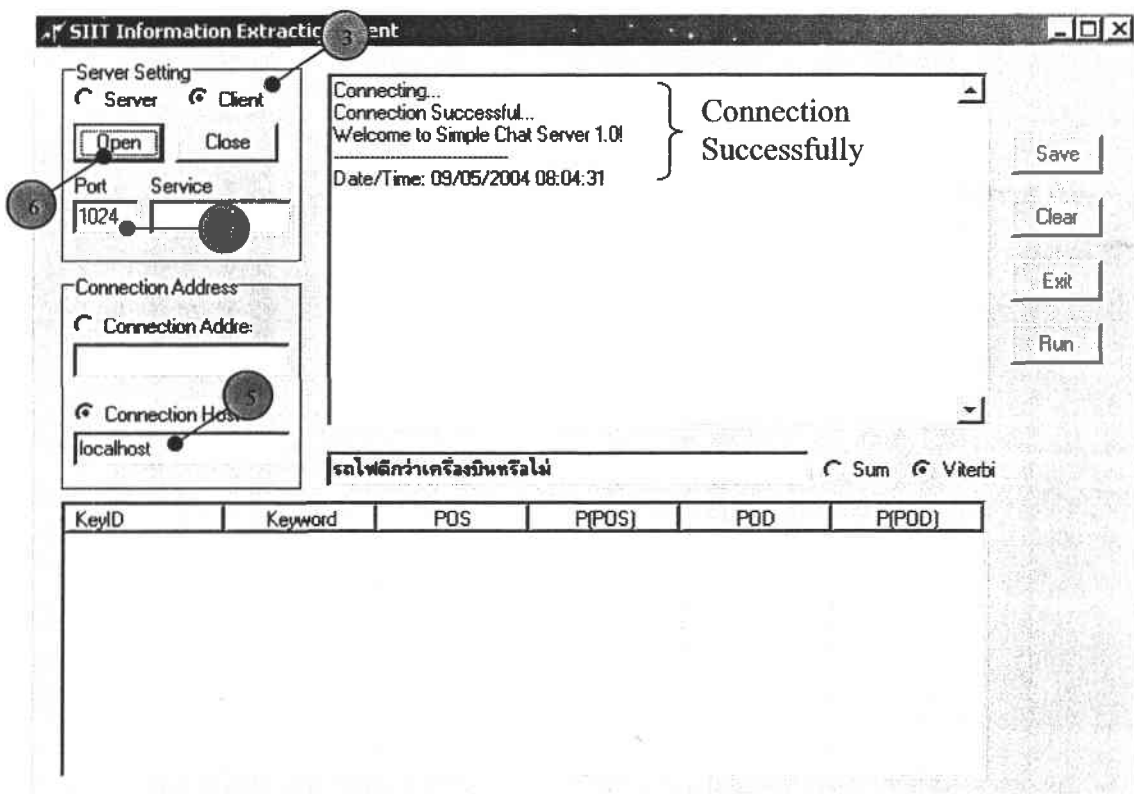


Figure B.2 Information Extraction Agent when Connection is Successful

## To work with Information Extraction Agent:

After starting and connecting IEA to server successfully, IEA will wait for the discussion message from the group meeting. When the message arrives, program in IEA will extract key decision factors from the utterance and display the result of extraction on the screen as illustrated in Figure B.3.

The screenshot shows the SIIT Information Extraction Agent interface. On the left, there are configuration panels for 'Server Setting' (with 'Client' selected) and 'Connection Address' (with 'localhost' selected). The main chat window displays a 'Meeting Message' from 'Server Admin: เรืองเรียน ต่อ ทวีธา ทำงานดีกว่ากัน'. Below the chat, a 'Result Table' is shown, listing extracted keywords and their positions. A callout box labeled 'Key Decision Factor' points to the words 'เรียน' and 'ทำงาน' in the table.


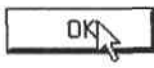
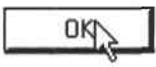
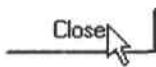
KeyID	Keyword	POS	P[POS]	POD	P[POD]
0	เรียน	5	0.0018010334...	3	0.0018010334...
1	เรียน	11	0.0019875039...	2	0.0019875039...
2	ดี	28	0.0028172180...	3	0.0028172180...
3	ทำงาน	37	0.003256839...	3	0.003256839...
4	ดี	11	0.0033321477...	2	0.0033321477...
5	ดี	13	0.0045801201...	3	0.0045801201...
6	กว่า	38	0.0073861308...	3	0.0073861308...
7	กัน	28	0.008268005...	3	0.008268005...

Figure B.3 Information Extraction Agent Screen after Receiving Utterance

After IEA displays the result of extraction on the screen, only key decision factors (from example, “เรียน” and “ทำงาน” from Figure B.3) are sent to the electronic meeting server on monitoring screen.

**To save and close Information Extraction Agent:**

After ending the discussion, IEA can save the discussion data to the file by following these steps:

1. Click  to request for saving discussion data.
2. Click  to confirm saving.
3. Click  after saving data completes.
4. Click  to close program

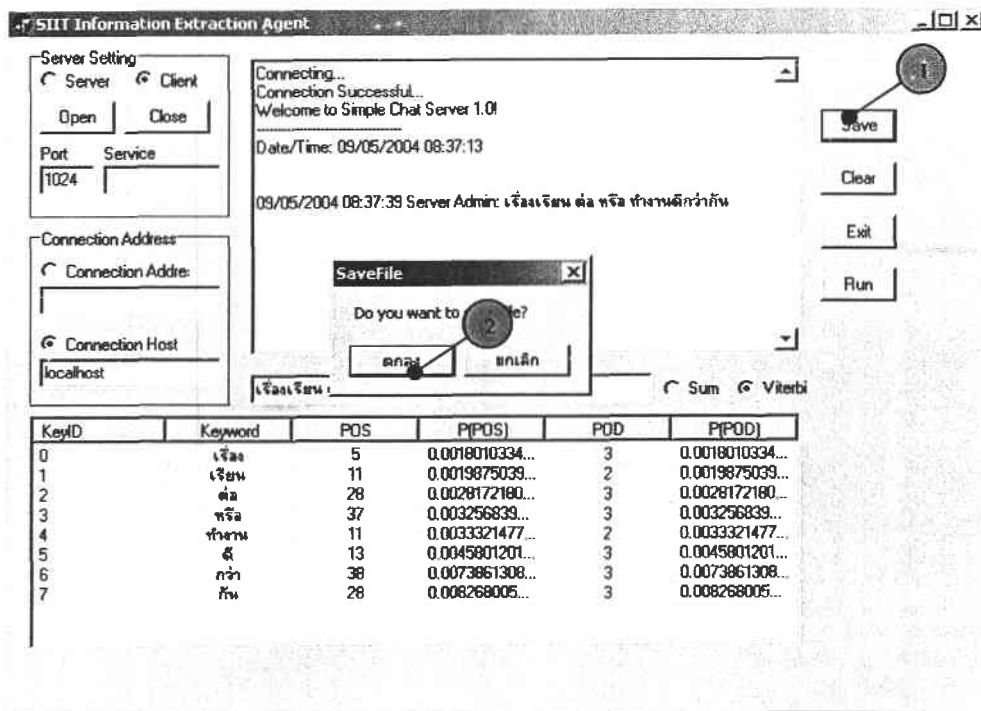


Figure B.4 Information Extraction Agent Screen after Clicking “save”

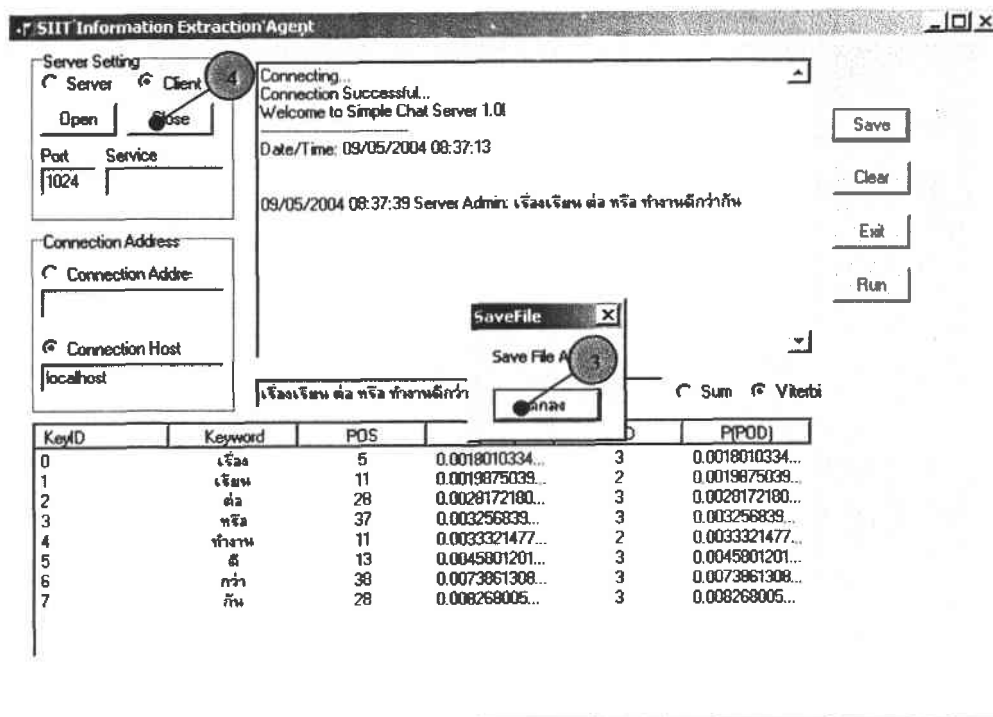


Figure B.5 Information Extraction Agent Screen after Saving Completes