


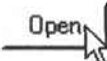
Appendix C

Electronic Meeting System Manual

Main component of an Intelligent Group Discussion Support System is an electronic meeting system. This system can support up to ten participants joining together to have a group meeting. This system consists of two main programs, which are electronic meeting server and electronic meeting client. Main server system is designed and developed for controlling the group meeting and allowing participants to monitor the information from each agent, while client system is created for allowing participants to enter the discussion.

Our electronic meeting system is developed by Delphi. In the first section, we will illustrate the way to work with server system. Then, we will illustrate the way to work with client system and how to communicate between server and client systems in the Intelligent Group Discussion Support System.

Getting start with electronic meeting server system

1. Double click  to start server system.
2. Fill “port” or “service” that server provides for transferring data.
3. Click  and wait for the connections.

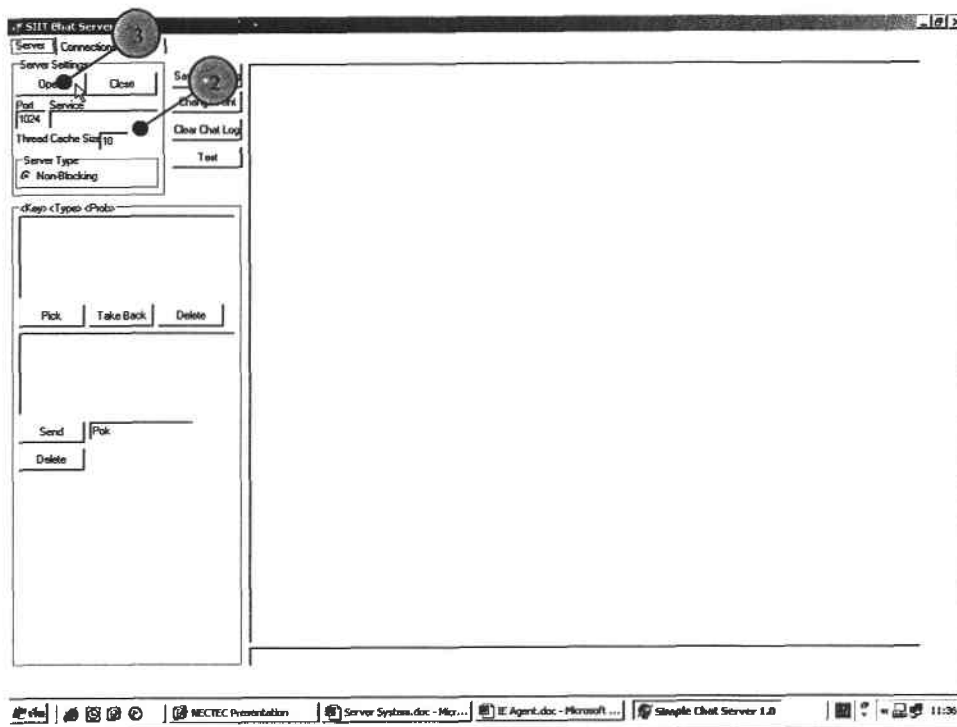


Figure C.1 Main Server System of Electronic Meeting System

After these steps, main server system will start as illustrated in Figure C.2.



Figure C.2 Main Server System after Opening Port for Waiting to the Connections.

4. User can enter the discussion and broadcast to all participants via the text box at the bottom of the screen, for example, “เลือกเรียนต่อ หรือ ทำงาน ดีกว่ากัน”

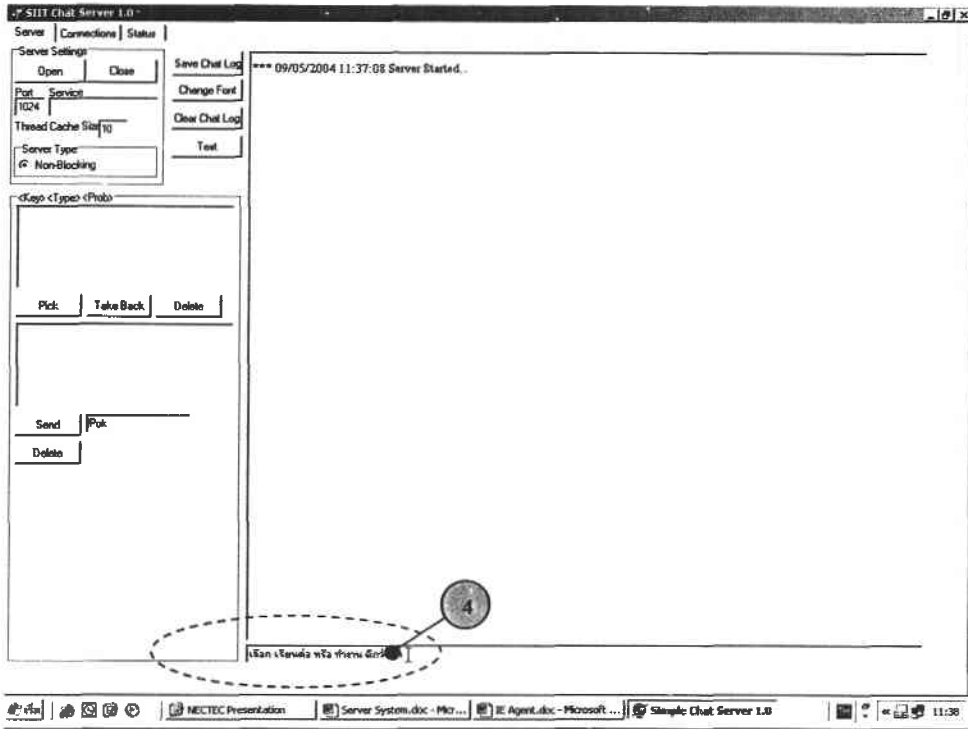


Figure C.3 Screen after Entering the Discussion.

5. Press <Enter> for broadcasting the discussion message to all participants.

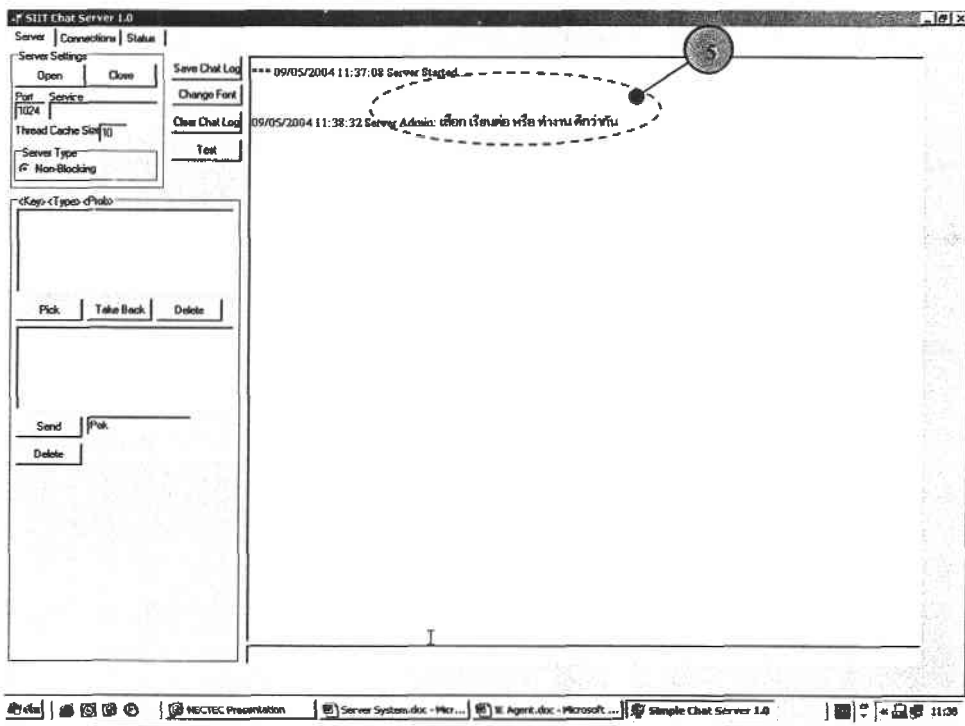


Figure C.4 Main Server System Screen after Broadcasting the Discussion Messages.

To change font in main server:

1. Click  to change font.

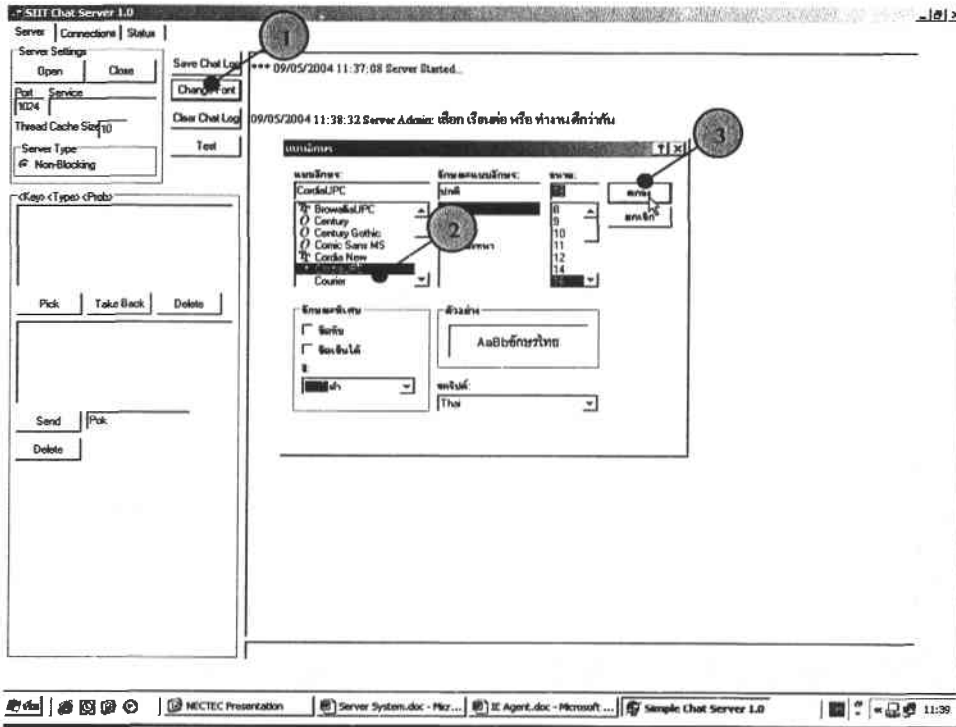



Figure C.5 Font Palette.

2. Select your desired font.
3. Click  to confirm font changing.

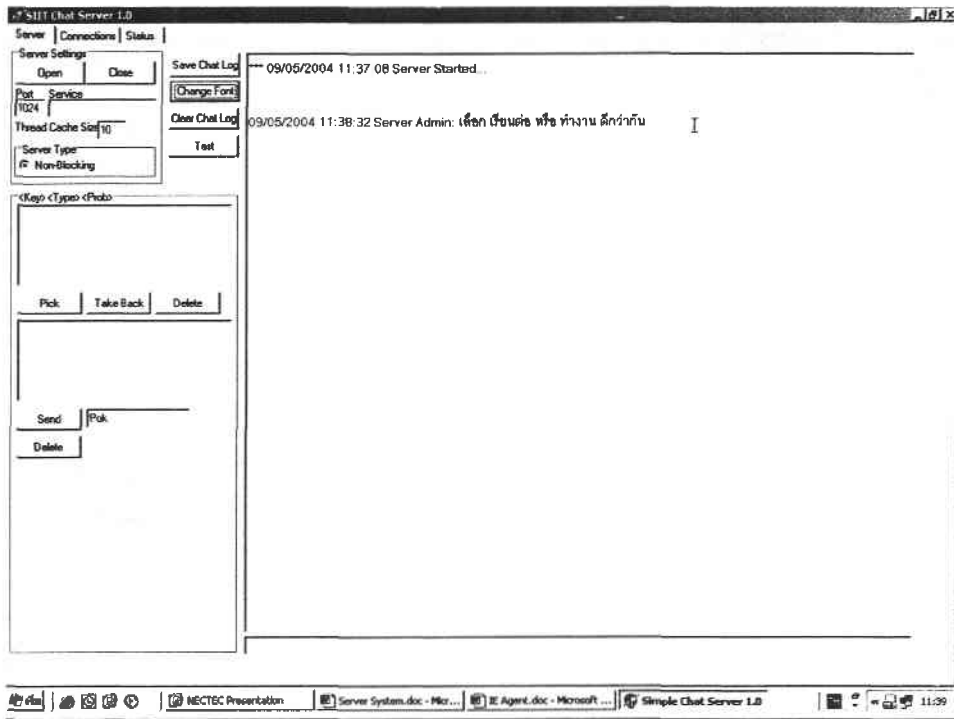


Figure C.6 Screen after Changing Font.

To communicate between agent and main server:

The control and monitor screen of main server system is designed to extract correct results from IEA before passing through other agents in the system. The steps of communication are illustrated as follows:

1. Select results from IEA.

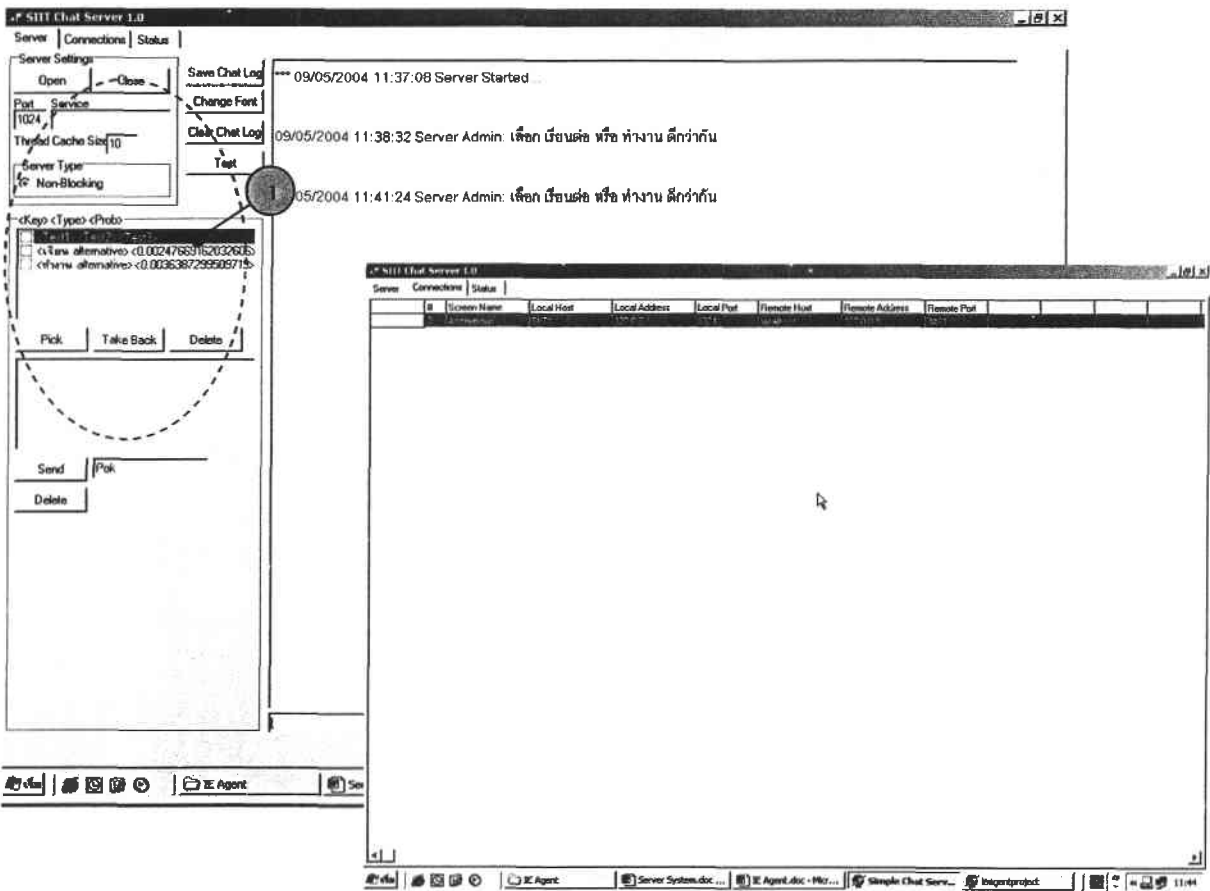


Figure C.7 Main Screen Illustrates IEA Results.

2. Click on for selecting key decision factor.

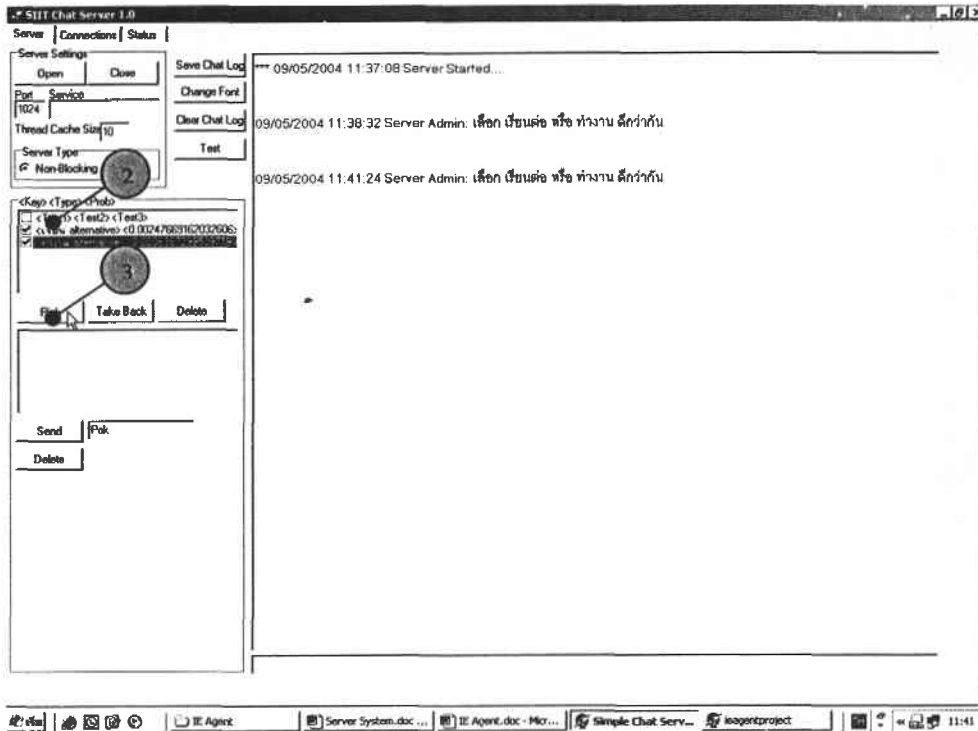


Figure C.8 Main Screen after Selecting Key Decision Factor.

3. Click  to confirm key decision factor.

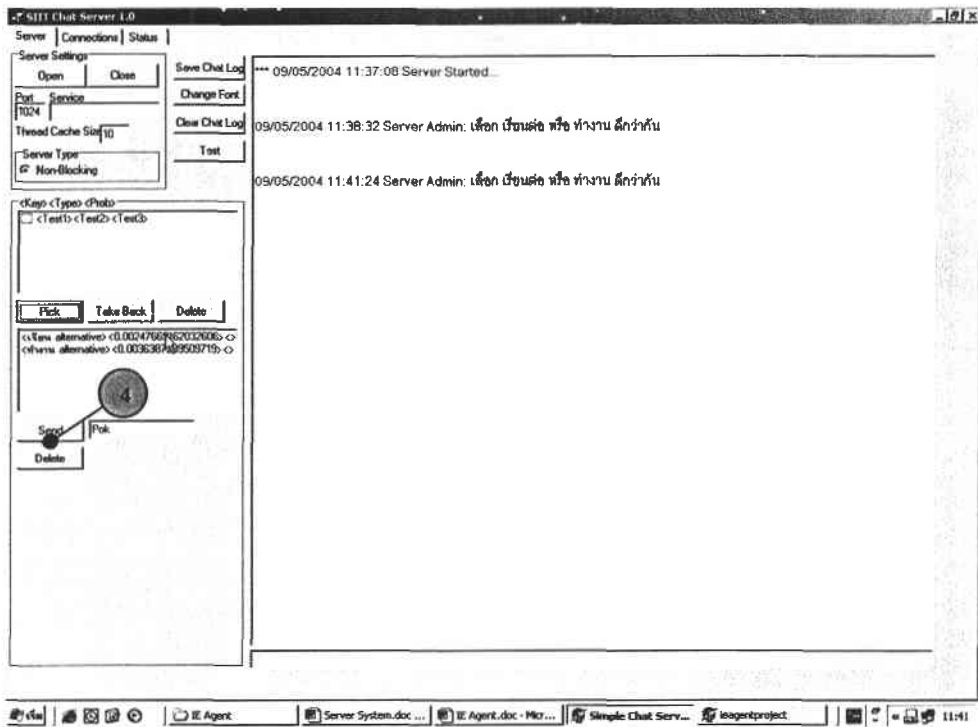


Figure C.9 Main Screen after Confirmation.

4. Click **Send** to send key decision factor to agents.

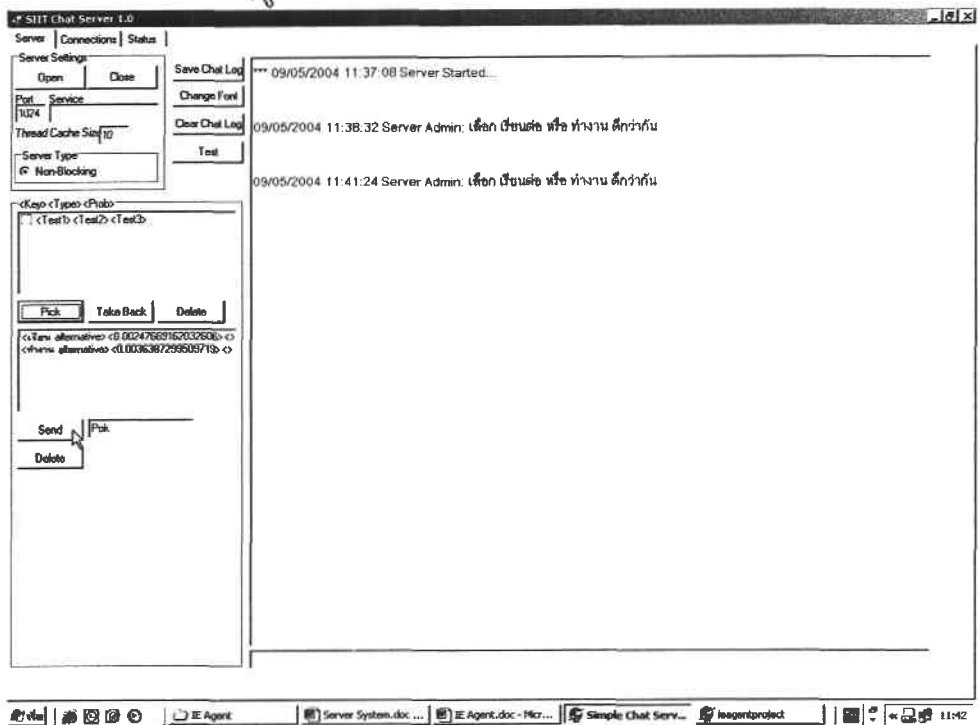


Figure C.10 Main Screen after Sending Key Decision Factor.

To save discussion data by using main server system:

1. Click  to save discussion data.

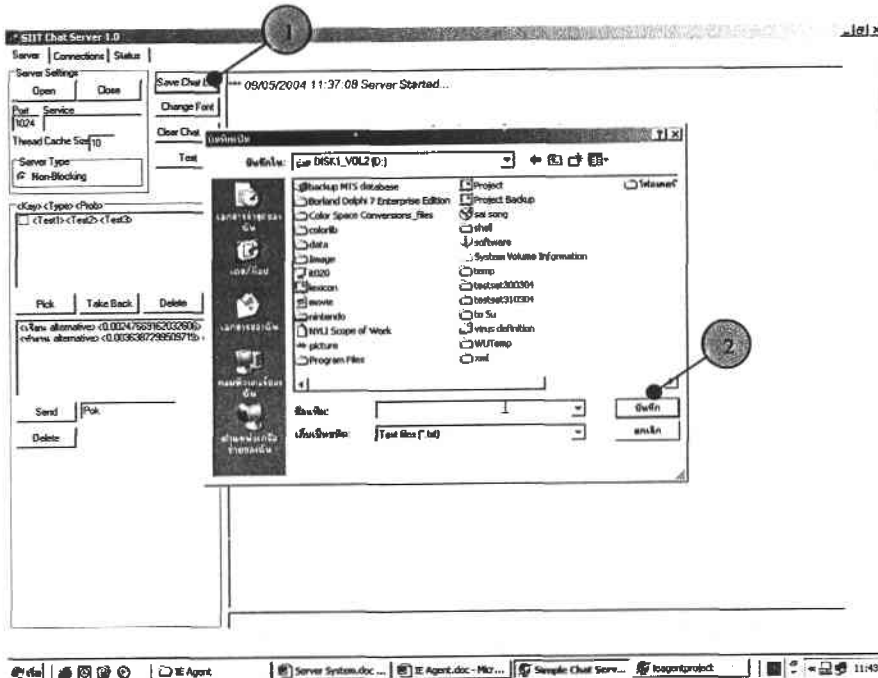


Figure C.11 Save Dialog

3. Click  to confirm saving of discussion data.

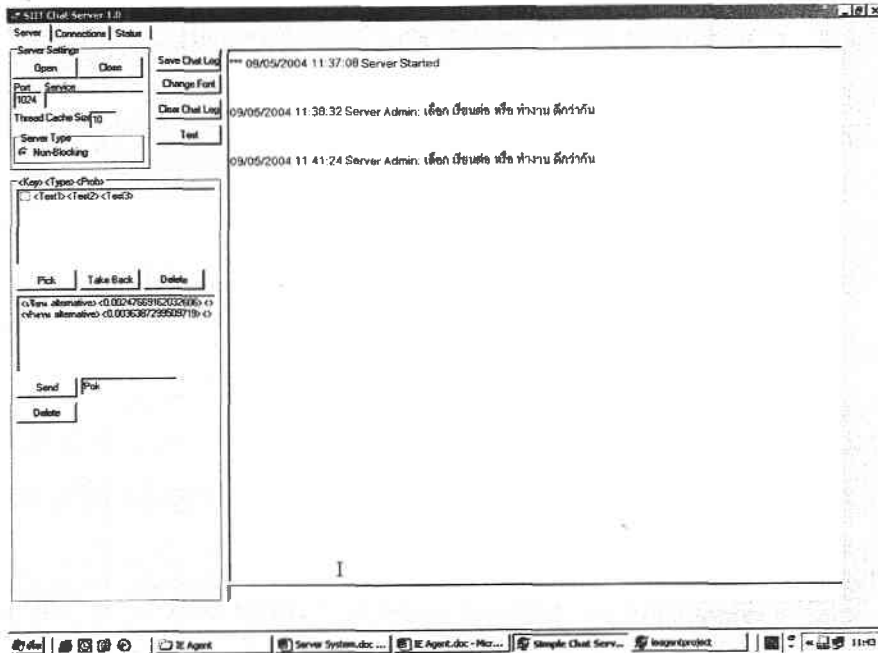


Figure C.12 Main Screen after Saving Dialog.

To clear log of the discussion data by using main server system:

1. Click **Clear Chat Log** to clear discussion data.

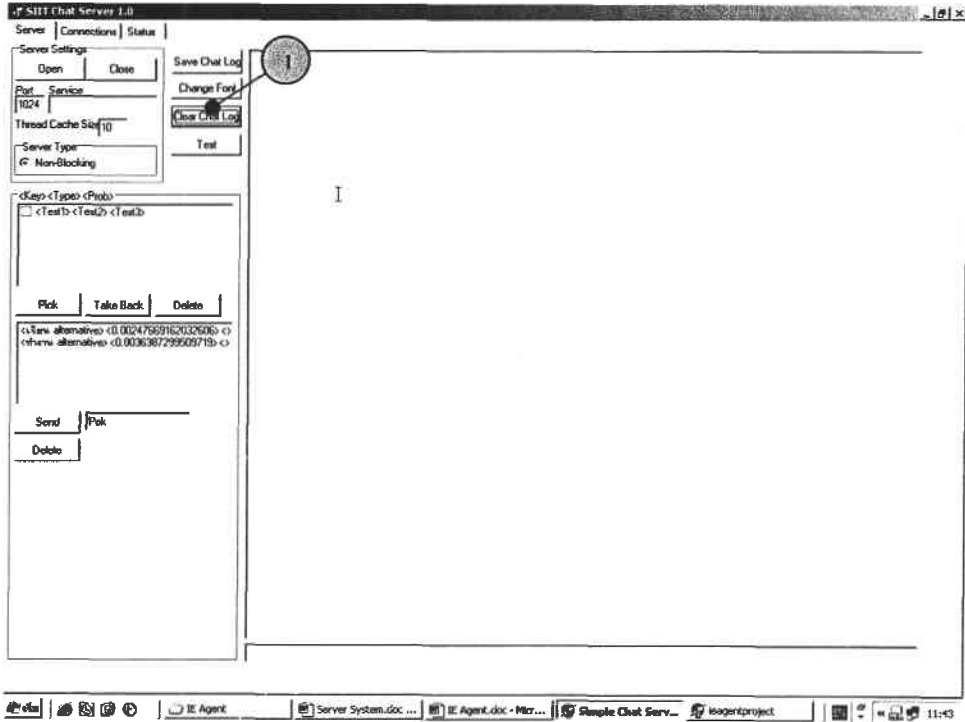


Figure C.13 Main Screen after Clearing Discussion Data.

To close main server:

1. Click  to close main server system.

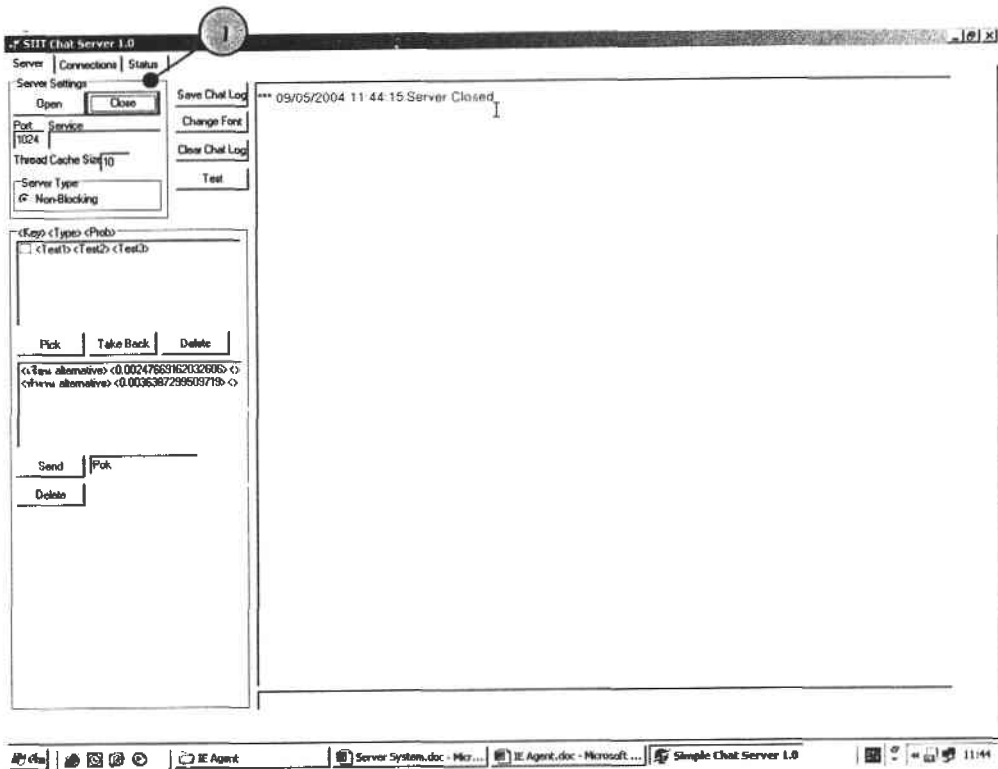




Figure C.14 Main Screen after Closing System.

Getting start with electronic meeting client system

1. Double click  to start client.
2. Fill “port” or “service” that server provides for transferring data (default port: 1024).
3. Fill “connection address” or “connection host” that server opened (default address: 127.0.0.1 or host: localhost)
4. Fill participant name at “screen name” (default name: anonymous)
3. Click  to connect server system.

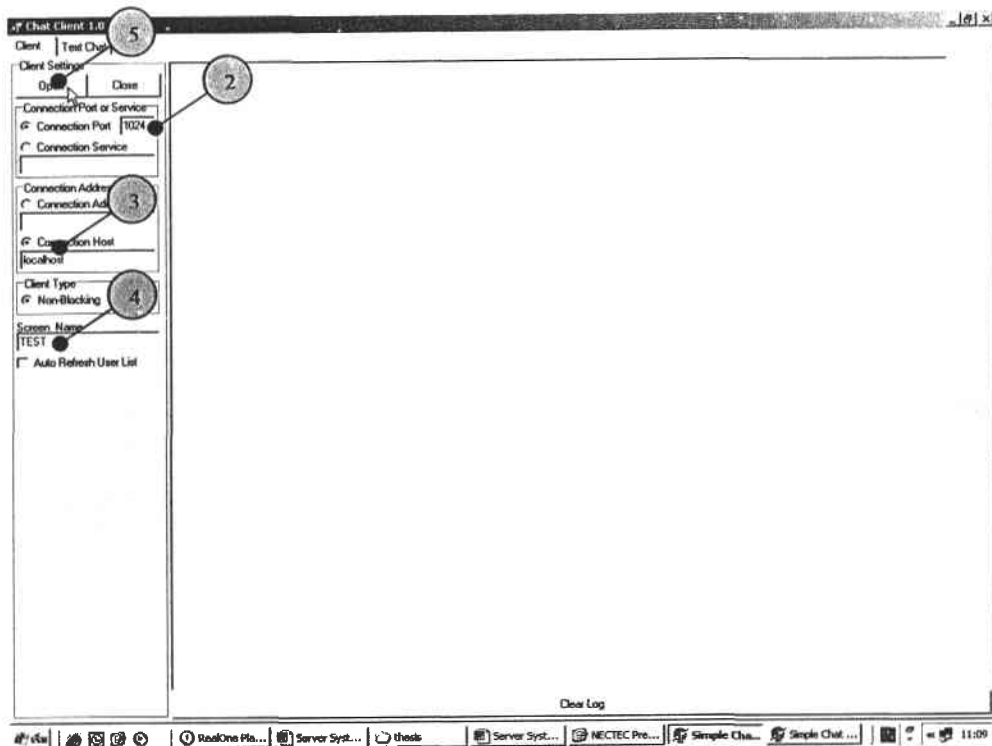


Figure C.15 Main Client Screen of Electronic Meeting System.

After these steps, client system will connect to server system as illustrated in Figure C.16.

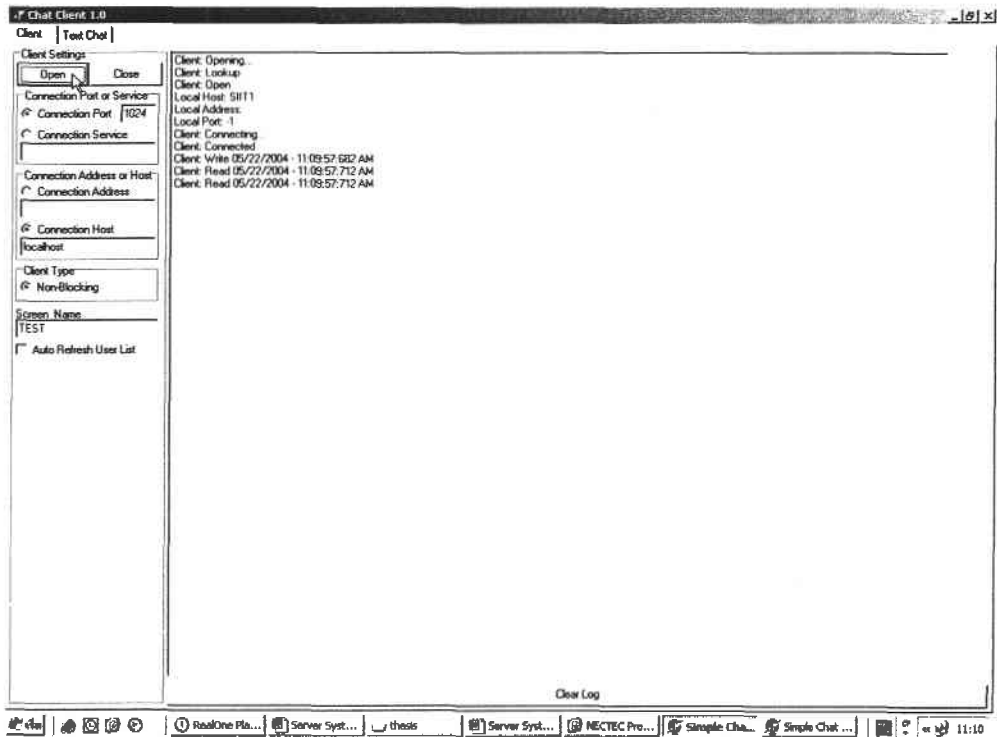


Figure C.16 Main Client Screen after Connecting Server System.

To use client in the electronic meeting system:

User can enter the discussion and broadcast to all participants by following these steps:

1. Click **Text Chat** |

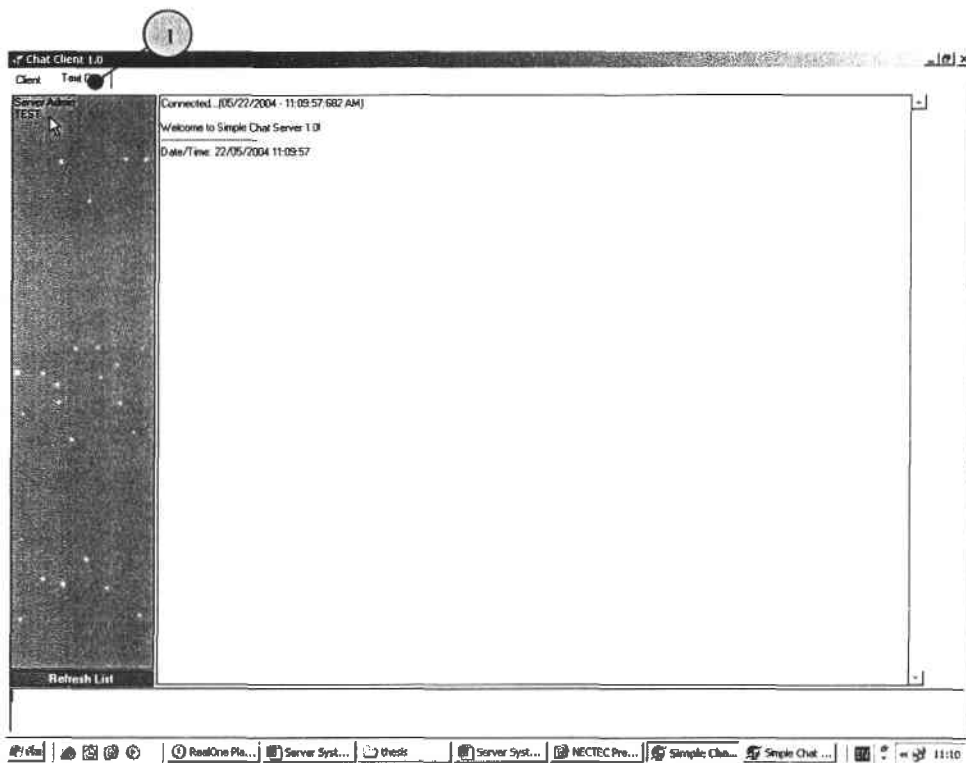


Figure C.17 Client Screen in Tab “Text Chat”

2. Type the discussion via the text box at the bottom of the screen, for example, “เราว่าเรียน ธรรมศาสตร์ ก็ดีนะ”

To clear log of the discussion data in client system:

1. Click  to clear discussion data.

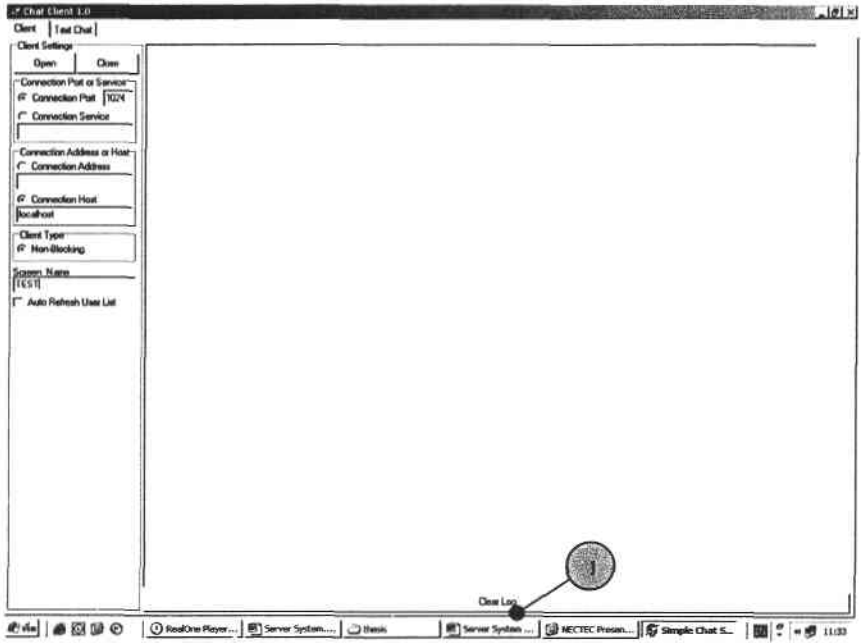


Figure C.20 Client Screen after Clearing Discussion Data.

To close client:

1. Click  to close client system.

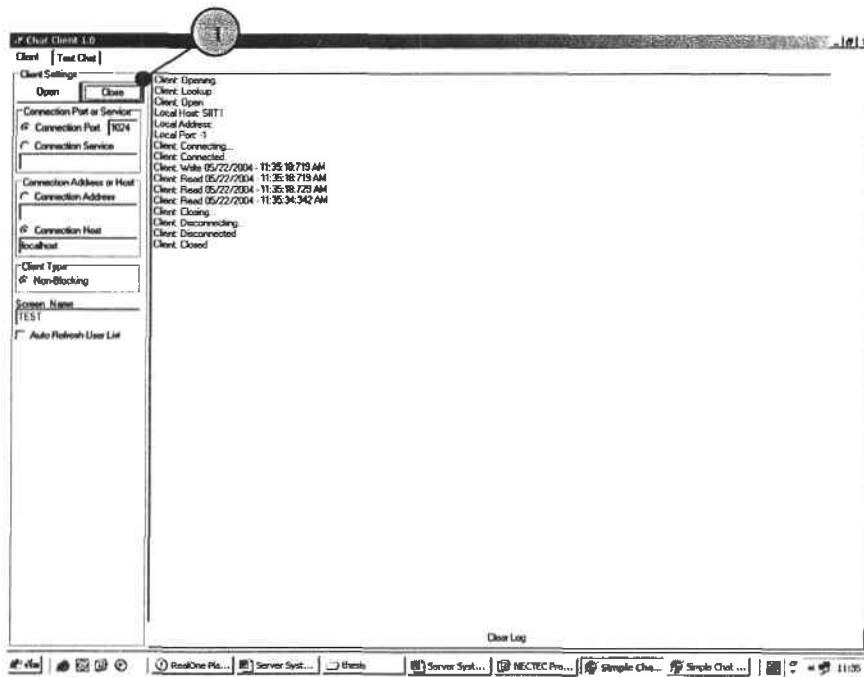


Figure C.21 Client Screen after Closing System.